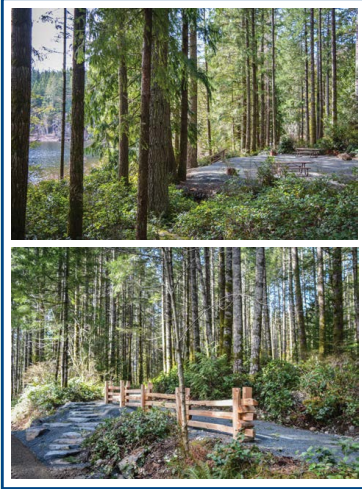


# Loveland Bay Provincial Park

## Welcome to Loveland Bay Park

Here you will find lakeside camping in a forested setting on Campbell Lake. There are 50 campsites, 2 group sites and 3 walk in sites. It offers boating, fishing, swimming and access to nearby hiking and mountain bike trails in the Snowden Demonstration Forest. For registered camping visitors there is a developed beach area, a gravel boat launch, and a 30 meter dock. At 30 hectares in size, this park protects lakeside forests and riparian habitat. Tree species include Douglas fir, Western hemlock and Western red cedar. Lakeside habitat includes, Ocean spray, Nootka rose, Willows, and Sedges.

As part of the Campbell River watershed, the lake is an important part of the community drinking water supply. All recreational users are reminded to do their part to protect water quality, by using restrooms and grey water pits provided and handling fuel with care. The lake is also a BC Hydro reservoir and is subject to fluctuating water levels throughout the year. Boaters are reminded to watch for submerged hazards, be aware of areas with swimmers present. Swimmers be aware that there are no lifeguards on duty.



Campbell River via Snowden Forest Service Road 26km

Brewster Lake Road

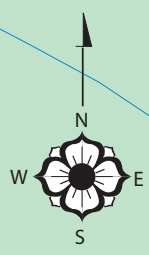
Campbell Lake Rd

Loveland Bay Access Road

Gate

Snowden Trails

Campbell River 24km



Note: T1, T2 and T3 Walk-in Tenting sites

LEGEND	
Parking	Hiking
Information	Water
Mountain Biking	Beach
Group Camping	Picnic Area
Boat Launch	Accessible Area
Accessible Toilets and Grey water disposal	
Accessible Toilets	
Park Boundary	
Trail	

0 50 100  
Scale in metres

Campbell Lake

